

Room Style and Layouts guide.

Wee Duncan has:

- 1 Whiteboard
- A 100" Projector screen
- Busbar electrical sockets
- Air conditioning
- Disabled access

Service and extras available

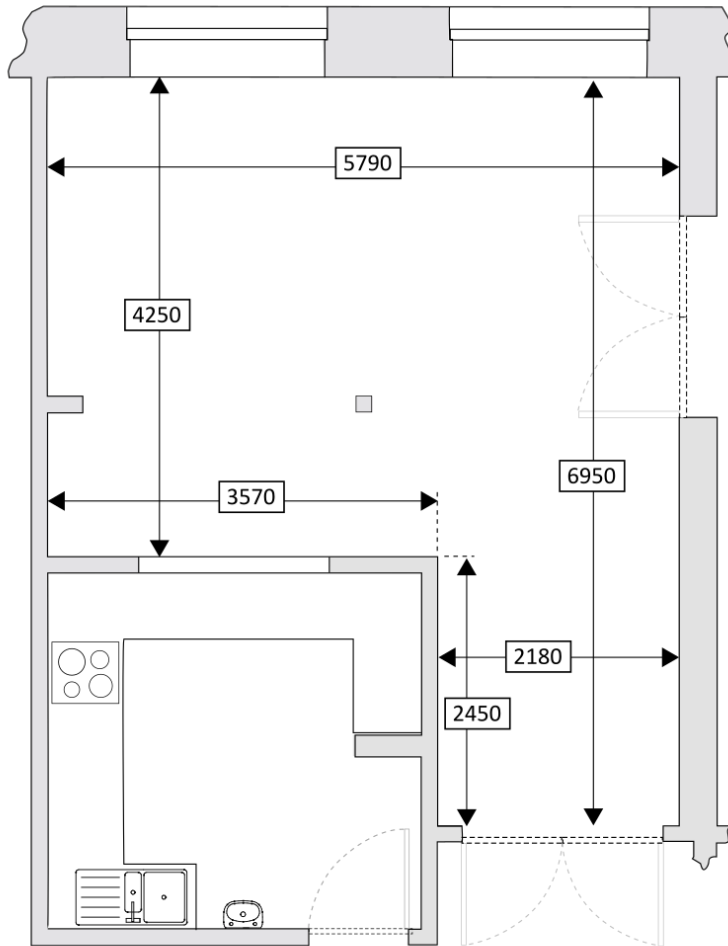
- Urn
- Water flasks
- Water jugs and glasses
- Mugs and teaspoons
- Service tables
- Flipcharts and pens
- LCD projector

Wee
duncan

A guide to standard room layouts.

Please do contact us if you have any questions, or wish to discuss other possible room layouts and event ideas.

Networking/no furniture



Wee Duncan

The smaller of the two rooms at Duncan Place. It has large south facing windows and is a bright and airy room.

It has access to Big Duncan through double doors and can be available to hire on its own or with Big Duncan.

Wee Duncan is has a hatch to a shared kitchen which can be available by arrangement.

There is a whiteboard and a projection screen fitted in the room, and there is a busbar with plenty of electrical sockets.

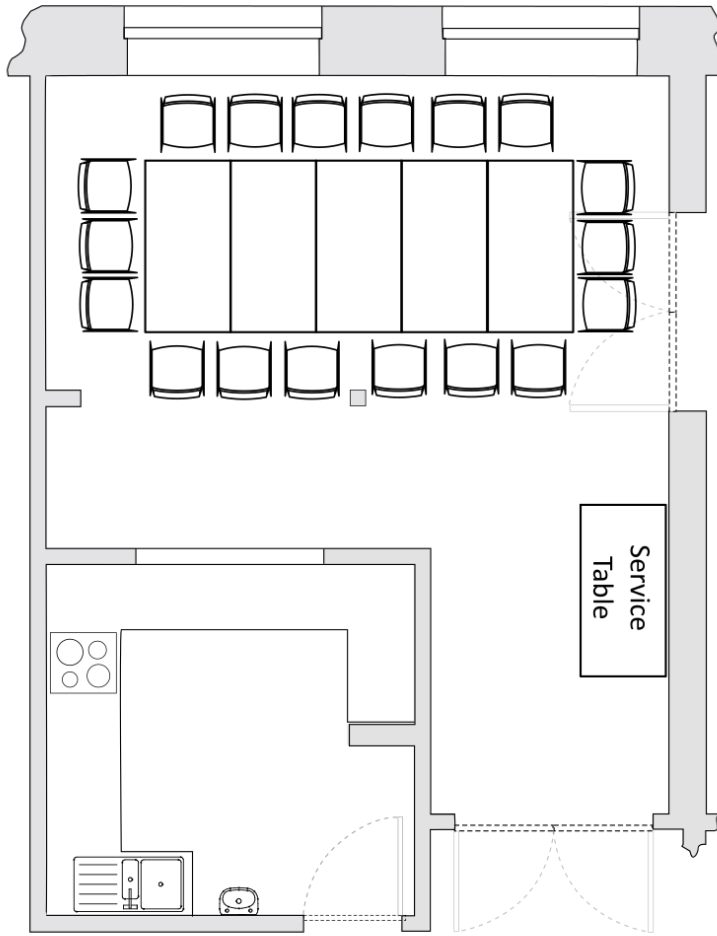
[Link to pictures and layout](#)

Notes:

The tables measure 1600mm x 800mm and it is possible to get 3 chairs down the longer side. That said a more comfortable arrangement would be 2.

Table with 3 chairs		Table with 2 chairs	

Board room



Maximum 18

5 tables

18 chairs

1 service station

Service hatch from Kitchen
available only by
arrangement

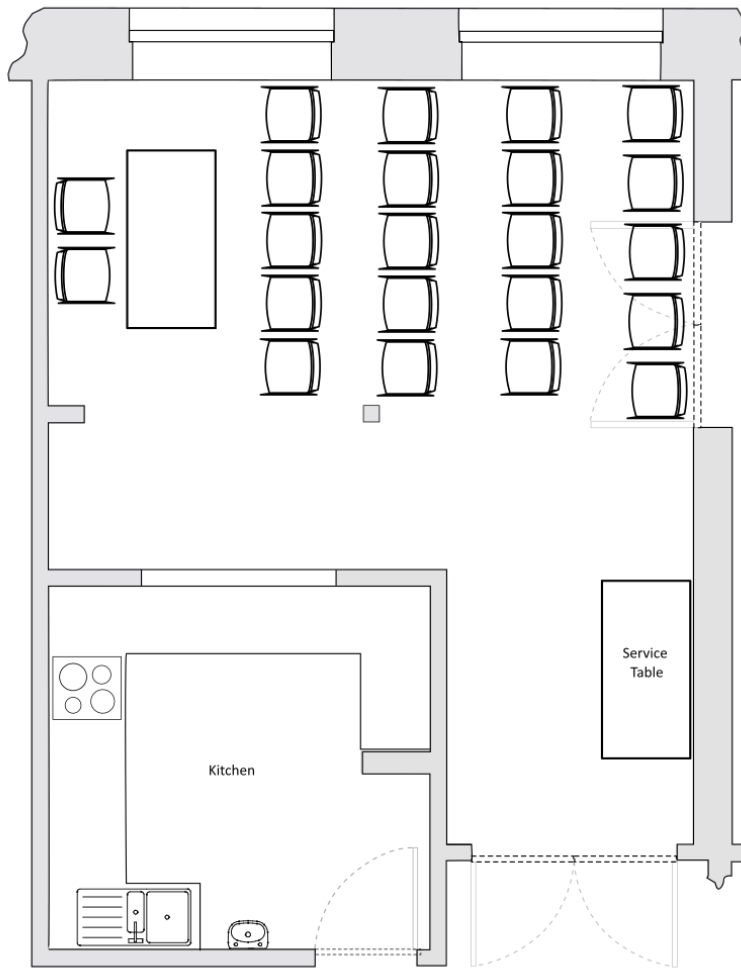
Screen

White Board

[Link to pictures and layout](#)

Notes:

Theatre style



Maximum – 22
20 – Audience
Top table – 2

1 service station

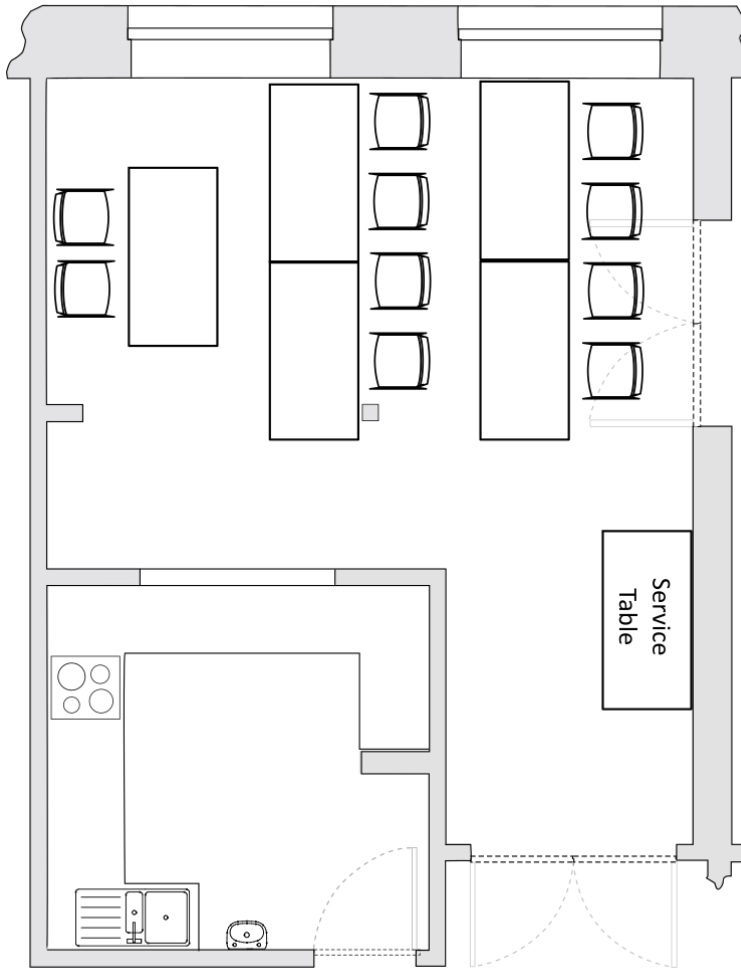
Service hatch from Kitchen
available only by
arrangement

Screen
White Board

[Link to pictures and layout](#)

Notes:

Classroom style



Maximum 10 (2 top table)

1 service station

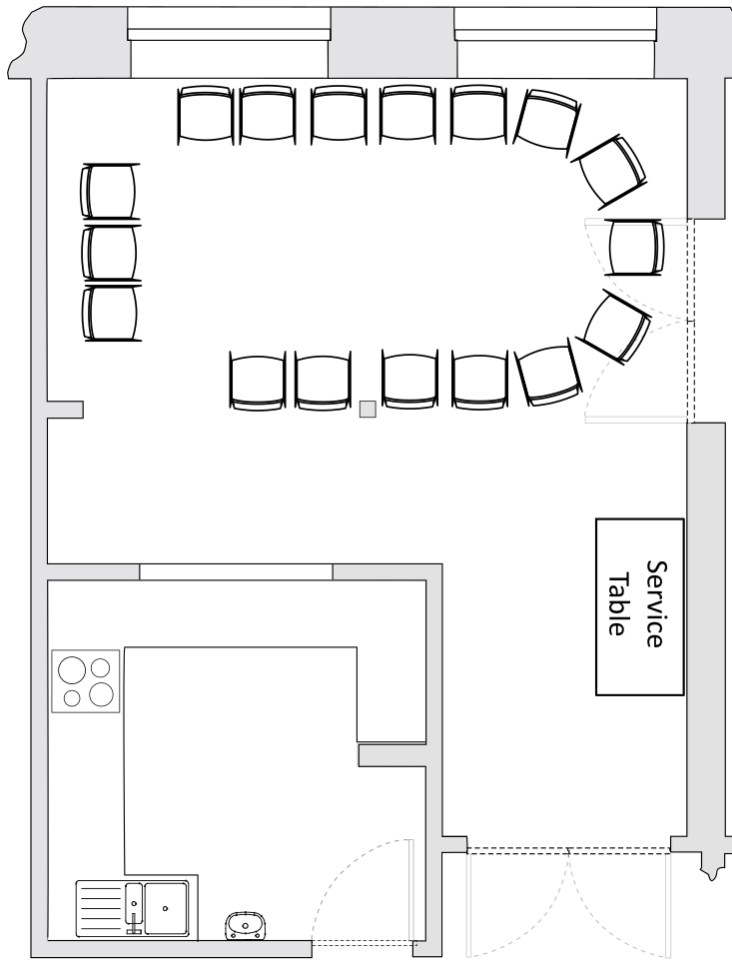
Service hatch from Kitchen
available only by
arrangement

Screen
White Board

[Link to pictures and layout](#)

Notes:

Horseshoe



Maximum 17

1 service station

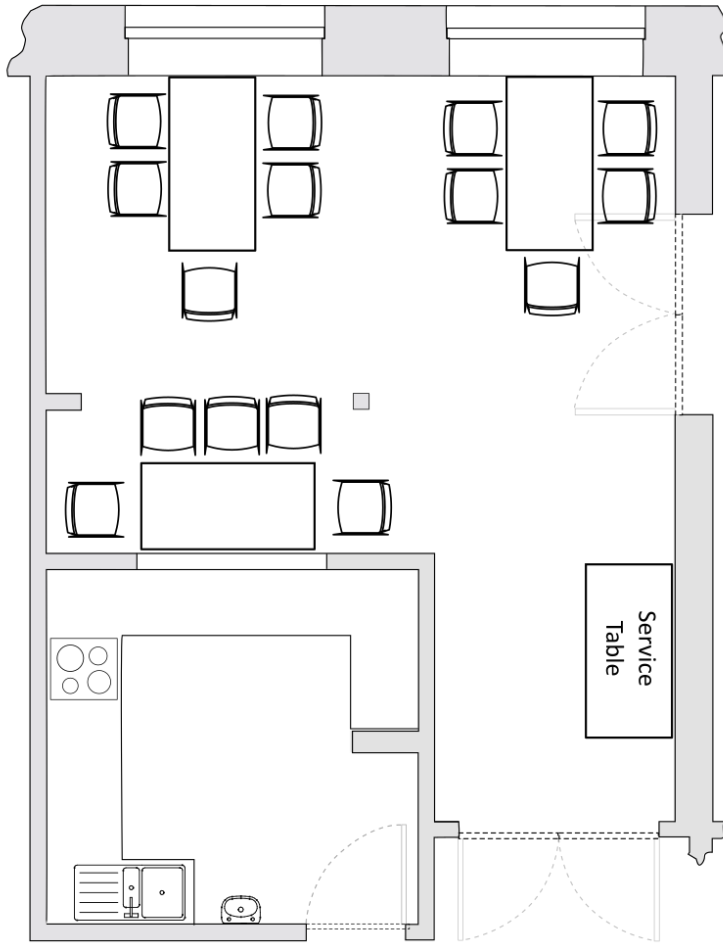
Service hatch from Kitchen
available only by
arrangement

Screen
White Board

[Link to pictures and layout](#)

Notes:

Workshop



Maximum 14

Three tables

3 x 5

x 4

1 service station

Access to Big Duncan

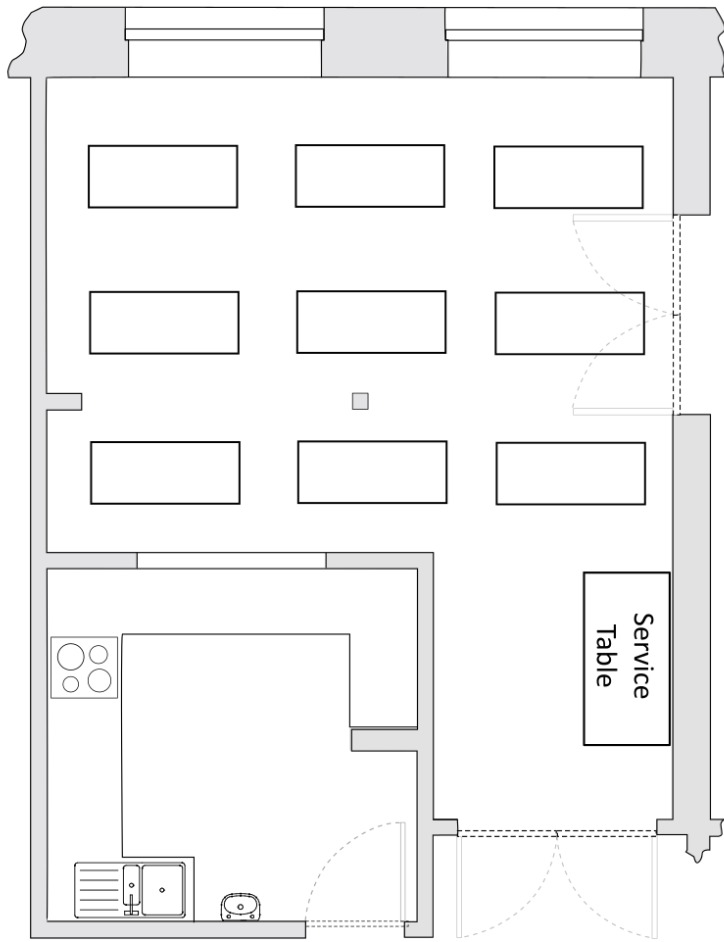
Screen

White Board

[Link to pictures and layout](#)

Notes:

Exercise mats



Maximum 9

1 service station

Screen
White Board

[Link to pictures and layout](#)

Notes: